

the Fox Point of view

Inside]

- Community Corner 3
- Neighborhood Business 4 & 5
- Fox Point Files 5
- Weekend WI 6
- Neighborhood Recipe 6
- Village Information 8 & 9
- Neighborhood Real Estate 10
- Neighborhood Classifieds 12
- Youth Classifieds 12
- Family Announcements 12
- Kids Corner 12
- Calendar of Events 14

**WE VALUE
YOUR OPINION!**
Please fill out the
Reader Survey
on pg 13.



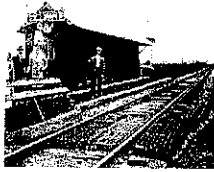
Meet artist, Timothy Cobb
Contemporary Gestures in Copper pg 4



by Douglas H. Frazer, Trustee
Fox Point Village Board

History of Railroads in Fox Point

The current railroad line running through Fox Point is almost exactly the original route. In 1870, the new Milwaukee, Lake Shore & Western Railroad hired leading citizen Anson W. Burtles to survey a route through the north shore area. A number of farmers objected on the basis that the line would run right through their properties. The objections came to naught. Construction of the line was underway by July of that year.



The line, interestingly, cut through northern Shorewood and the middle of Whitefish Bay. From the Milwaukee Depot, the line ran along what is now the Oak Leaf Bike trail. The line split at Lake Shore Junction – located just south of Capitol Drive. The northwest branch continued up along and through Estabrook Park to Menomonee Falls, German-

town, and the Fox Valley. The Lake Shore route continued north more or less along what is now Ardmore Avenue. The line entered Whitefish Bay at about Glendale Ave and continued north in a slightly westerly direction through the southwest corner of what is now Whitefish Bay High School and up along Marlborough Drive. The Whitefish Bay station was at Silver Spring Drive.

The line continued northwest parallel to and just east of Consaul Place, bisected the Richards School property and continued on the same line. It crossed Devon just west of Kent and continued roughly along the western boundary of the Jewish Community Center fields. It joined what is now the existing line just southwest of where the Santa Monica Blvd. bridge spans the tracks.

The route north was uphill. This occasioned the creation

of a little railroad yard behind Winkie's. There was stationed an extra pusher engine and crew whose job it was to assist with the climb up to Green Tree Road.

Dillman's Station serviced Fox Point. It was located north of Brown Deer Road where the tracks cross Regent Road – just south of the current Bayside municipal buildings. From there, the postmaster took the mail for pick-up at the Dillman Inn at 8615 North Port Washington Road. In 1894 a Fox Point Station was built on the east side of the tracks behind what is now 7801 North Boyd Way. Station Road (East Hyde Way) ran to Lake Drive. The journey from Fox Point to downtown Milwaukee took one-half hour.

The Chicago & North Western Railroad eventually acquired the line. In 1927, the railroad abandoned the section of the track from North Shore Junction to the connection immediately north of the Fox Point village boundary.

Streetcars, however, continued to service part of this route. The Milwaukee Electric Railway and Light Company ran a streetcar line along Oakland Avenue, which then jogged to join Marlborough Drive in Whitefish Bay,

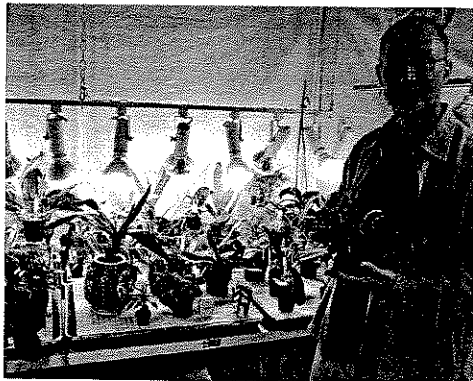
and then north along Lake Drive to Day Avenue near Klode Park. Eventually the line was extended north along Lake Drive to Bell Road. From there it continued north along the east side of the railroad tracks to Bradley Road. The streetcar never officially went further north, although from time to time inattentive motorists would overshoot the end of the line.

In the early days, a streetcar marked "private" serviced the Milwaukee Country Day School -- established in 1917 at 6401 N. Richards Street (N. Santa Monica Blvd.). The streetcar left Broadway and Mason Streets in downtown Milwaukee every weekday morning at 8:04 a.m. Many of the faculty and student body took the trolley up to Fox Point, disembarked at High Street (School Road) about 40 minutes later, and walked the two short blocks to the school. At about 5 p.m. the faculty and students boarded the trolley for the trip home to the surrounding fields and farms.

Mr. Frazer is a trustee on the Fox Point Village board. The views expressed are his own and not necessarily those of the village, the village board, other village board members, or Neighborhood Communications, LLC.

article continued from the previous page

According to Tim, his casual work schedule allows him to give the best part of his day to cultivating expression. "There is too much to do to spend a lot of time working," says Tim. He enjoys the freedom to go back and forth between projects. His current vision includes creating a North Shore Orchestra and someday hosting a North Shore Art Festival and concert series near the skating rink by Stormonth School.



Feel free to stop by and glean some wisdom and appreciation from a talented and gifted artist, right in your neighborhood.

Tim would like to encourage you to "Know yourself and live life fully." He welcomes you to

MAXFIELD'S PANGAKE HOUSE

serving breakfast & lunch | daily breakfast & lunch specials

Friday Fish Fry 11am-4pm

Carry out or dine-in menu

333 W. Brown Deer Rd.,
Fox Point, WI
Open Daily 6am-4pm

414-247-4994
maxfieldspancakehouse.com